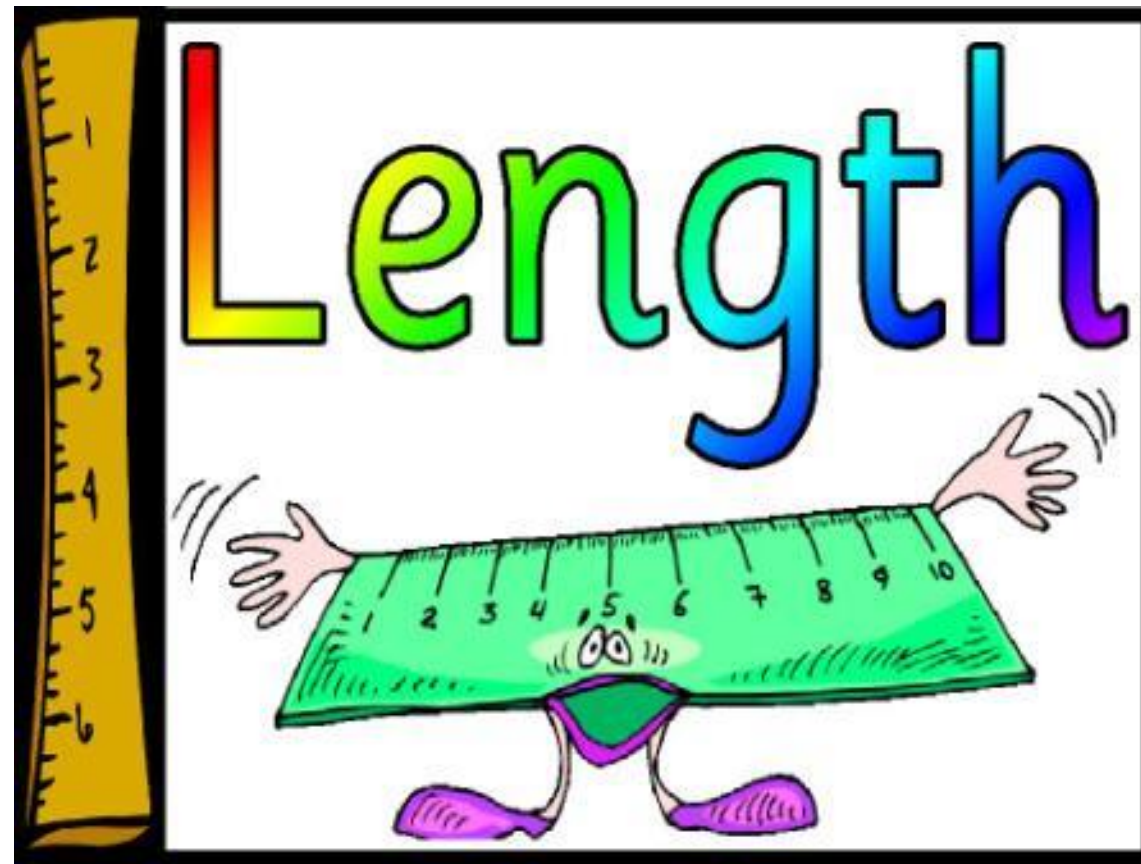


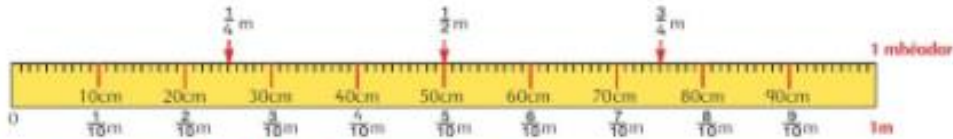
Mata Rang 4: Fad

25ú – 29ú Bealtaine



Caibidil 16 Fad 1

Méadair agus ceintiméadair



1. Úsáid an mhéadarshlat le hiad seo a fháil.

- $\frac{1}{2} \text{ m} = 50 \text{ cm}$ (a) $\frac{1}{2} \text{ m} = \square \text{ cm}$ (b) $\frac{2}{4} \text{ m} = \square \text{ cm}$ (c) $\frac{1}{10} \text{ m} = \square \text{ cm}$
 (d) $\frac{6}{10} \text{ m} = \square \text{ cm}$ (e) $\frac{9}{10} \text{ m} = \square \text{ cm}$ (f) $\frac{7}{10} \text{ m} = \square \text{ cm}$ (g) $\frac{2}{10} \text{ m} = \square \text{ cm}$

2. Cén codán de mhéadar é:

- (a) 10cm (b) 20cm (c) 40cm (d) 70cm (e) 30cm (f) 90cm?



3. Úsáid an mhéadarshlat leis na freagraí a fháil.

- $0.1 \text{ m} = 10 \text{ cm}$ (a) $0.2 \text{ m} = \square \text{ cm}$ (b) $0.4 \text{ m} = \square \text{ cm}$ (c) $0.7 \text{ m} = \square \text{ cm}$
 (d) $0.9 \text{ m} = \square \text{ cm}$ (e) $0.3 \text{ m} = \square \text{ cm}$ (f) $0.5 \text{ m} = \square \text{ cm}$ (g) $0.8 \text{ m} = \square \text{ cm}$

4. $10 \text{ cm} \Rightarrow \frac{1}{10} \text{ m} = 0.1 \text{ m}$ (a) $20 \text{ cm} = \frac{\square}{10} \text{ m} = \square \text{ m}$ (b) $40 \text{ cm} = \frac{\square}{10} \text{ m} = \square \text{ m}$
 (c) $60 \text{ cm} = \frac{\square}{10} \text{ m} = \square \text{ m}$ (d) $70 \text{ cm} = \frac{\square}{10} \text{ m} = \square \text{ m}$ (e) $90 \text{ cm} = \frac{\square}{10} \text{ m} = \square \text{ m}$



$110 \text{ cm} \Rightarrow 1 \text{ m} + 10 \text{ cm} \Rightarrow 1 \frac{1}{10} \text{ m} = 1.1 \text{ m}$

5. $120 \text{ cm} \Rightarrow 1 \text{ m} + 20 \text{ cm} \Rightarrow 1 \frac{2}{10} \text{ m} = 1.2 \text{ m}$ (a) $130 \text{ cm} \Rightarrow \square \text{ m} + \square \text{ cm} \Rightarrow 1 \frac{\square}{10} \text{ m} = \square \text{ m}$
 (b) $160 \text{ cm} \Rightarrow \square \text{ m} + \square \text{ cm} \Rightarrow 1 \frac{\square}{10} \text{ m} = \square \text{ m}$ (c) $190 \text{ cm} \Rightarrow \square \text{ m} + \square \text{ cm} \Rightarrow 1 \frac{\square}{10} \text{ m} = \square \text{ m}$
 (d) $240 \text{ cm} \Rightarrow \square \text{ m} + \square \text{ cm} \Rightarrow 2 \frac{\square}{10} \text{ m} = \square \text{ m}$ (e) $360 \text{ cm} \Rightarrow \square \text{ m} + \square \text{ cm} \Rightarrow 3 \frac{\square}{10} \text{ m} = \square \text{ m}$

$1.1 \text{ méadair} \Rightarrow 1 \frac{1}{10} \text{ m} = 110 \text{ cm}$

6. (a) $1.2 \text{ m} \Rightarrow 1 \frac{2}{10} \text{ m} = \square \text{ cm}$ (b) $1.4 \text{ m} \Rightarrow 1 \frac{4}{10} \text{ m} = \square \text{ cm}$ (c) $2.3 \text{ m} \Rightarrow 2 \frac{3}{10} \text{ m} = \square \text{ cm}$
 (d) $3.4 \text{ m} \Rightarrow 3 \frac{4}{10} \text{ m} = \square \text{ cm}$ (e) $3.7 \text{ m} \Rightarrow 3 \frac{7}{10} \text{ m} = \square \text{ cm}$ (f) $4.8 \text{ m} \Rightarrow 4 \frac{8}{10} \text{ m} = \square \text{ cm}$

Méadair agus ceintiméadair (Metres and centimetres)

➤ Ná déan dearmad: 1m = 100 cm

Ceist 1:

Úsáid an mhéadarshlat le hiad seo a fháil. Use the metrestick at the top of the page to find the following. Please write the full number sentence, e.g.

✓ $\frac{1}{2} \text{ m} = 50 \text{ cm}$

Críochnaigh ceist 1 anois.

Ceist 2:

Cén codán de mhéadar é (what fraction of a metre is)? Use the metrestick to help you e.g.

(a) 10 cm = 1/10 m

Ceist 3:

Úsáid an mhéadarshlat chun na freagraí a fháil. Use the metrestick to find the answers.

Write full number sentences. E.g. 0.1 m = 10cm

Ceist 4:

Úsáid an mhéadarshlat arís agus scríobh na faid mar chodáin agus codáin deachúlacha de mhéadar. Using the metrestick again, write the measurements as fractions and decimal fractions of a metre. E.g. 10 cm = 1/10m = 0.1 m. Write full number sentences please.

Ceist 5:

Úsáid an mhéadarshlat arís chun cabhrú leat. Use the metrestick to help you.

Write your answers as per example shown.

Ceist 6:

Is a mhalairt de cheist 5 atá i gceist 6. (Question 6 is the opposite of question 5. Refer to the metresticks to help you) agus scríobh uimhirabairtí iomlána.

Fad: méadair agus ceintiméadair

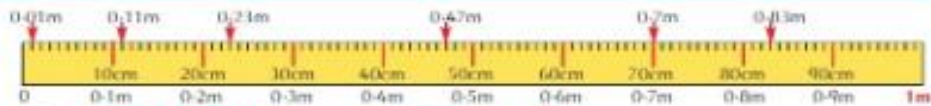


1. Úsáid an mhéadarshlat le hiad seo a fháil:

$\frac{1}{100}m = 1cm$ (a) $\frac{2}{100}m = \square cm$ (b) $\frac{3}{100}m = \square cm$ (c) $\frac{7}{100}m = \square cm$
 (d) $\frac{11}{100}m = \square cm$ (e) $\frac{13}{100}m = \square cm$ (f) $\frac{27}{100}m = \square cm$ (g) $\frac{63}{100}m = \square cm$

2. Cén codán de mhéadar é:

(a) 1cm (b) 2cm (c) 3cm (d) 11cm (e) 21cm (f) 43cm (g) 78cm?



3. Úsáid an mhéadarshlat leis na freagraí a fháil.

$0.01m = 1cm$ (a) $0.02m = \square cm$ (b) $0.07m = \square cm$ (c) $0.09m = \square cm$
 (d) $0.11m = \square cm$ (e) $0.12m = \square cm$ (f) $0.27m = \square cm$ (g) $0.84m = \square cm$

4. $1cm \Rightarrow \frac{1}{100}m = 0.01m$ (a) $2cm \Rightarrow \frac{\square}{100}m = \square m$ (b) $4cm \Rightarrow \frac{\square}{100}m = \square m$
 (c) $9cm \Rightarrow \frac{\square}{100}m = \square m$ (d) $11cm \Rightarrow \frac{\square}{100}m = \square m$ (e) $13cm \Rightarrow \frac{\square}{100}m = \square m$
 (f) $24cm \Rightarrow \frac{\square}{100}m = \square m$ (g) $85cm \Rightarrow \frac{\square}{100}m = \square m$ (h) $94cm \Rightarrow \frac{\square}{100}m = \square m$



$101cm \Rightarrow 1m + 1cm \Rightarrow 1\frac{1}{100}m = 1.01m$ $112cm \Rightarrow 1\frac{12}{100}m = 1.12m$

5. (a) $102cm \Rightarrow 1m + \square cm \Rightarrow 1\frac{\square}{100}m = \square m$ (b) $104cm \Rightarrow \square m + \square cm \Rightarrow 1\frac{\square}{100}m = \square m$
 (c) $205cm \Rightarrow \square m + \square cm \Rightarrow 2\frac{\square}{100}m = \square m$ (d) $306cm \Rightarrow \square m + \square cm \Rightarrow 3\frac{\square}{100}m = \square m$
 (e) $111cm \Rightarrow \square m + \square cm \Rightarrow 1\frac{\square}{100}m = \square m$ (f) $123cm \Rightarrow \square m + \square cm \Rightarrow 1\frac{\square}{100}m = \square m$
 (g) $243cm \Rightarrow \square m + \square cm \Rightarrow 2\frac{\square}{100}m = \square m$ (h) $378cm \Rightarrow \square m + \square cm \Rightarrow 3\frac{\square}{100}m = \square m$

$1.01m \Rightarrow 1\frac{1}{100}m = 101cm$ $1.12m \Rightarrow 1\frac{12}{100}m = 112cm$

6. (a) $1.02m \Rightarrow 1\frac{\square}{100}m \Rightarrow \square cm$ (b) $1.04m \Rightarrow 1\frac{\square}{100}m \Rightarrow \square cm$ (c) $1.09m \Rightarrow 1\frac{\square}{100}m = \square cm$
 (d) $1.11m \Rightarrow 1\frac{\square}{100}m \Rightarrow \square cm$ (e) $2.34m \Rightarrow 2\frac{\square}{100}m \Rightarrow \square cm$ (f) $3.67m \Rightarrow 3\frac{\square}{100}m = \square cm$
 (g) $4.79m \Rightarrow 4\frac{\square}{100}m \Rightarrow \square cm$ (h) $5.21m \Rightarrow 5\frac{\square}{100}m \Rightarrow \square cm$ (i) $6.87m \Rightarrow 6\frac{\square}{100}m = \square cm$

Ceist 1:

Úsáid an mhéadarshlat chun na codáin de mhéadair a aimsiú i ceintiméadair. Use the metrestick to convert the fractions of metres to centimetres. Write full number sentences.

Ceist 2:

Athraigh na ceintiméadair go codáin de mhéadair. Write the centimetres as fractions of a meter. This is the opposite to question 1 above.

Ceist 3:

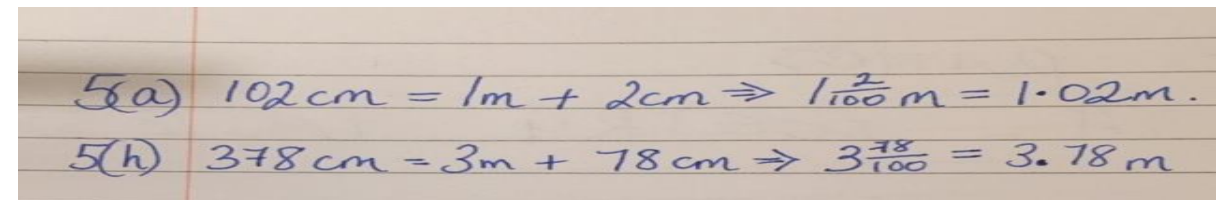
Úsáid an mhéadarshlat chun na ceintiméadair a athrú go codáin deachúlacha de mhéadair. Use the metre stick to write centimetres as decimal fractions of a metre. Write full number sentences as per example: $0.01m = 1cm$.

Ceist 4:

Scríobh na ceintiméadair mar chodán agus mar chodán deachúlacha de mhéadair. Write the centimetres as fractions and decimal fractions of a metre. Write full number sentences as per example given.

Ceist 5:

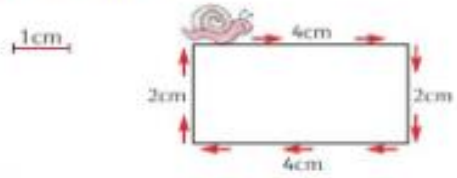
Scríobh na faid i bhfoirm leathnaithe. Write the lengths in expanded form e.g.



Ceist 6:

Scríobh na méadair deachúlacha mar ceintiméadair. A mhairt de cheist 5 thuas. Rewrite the metres as centimetres. This is the opposite of Question 5 above.

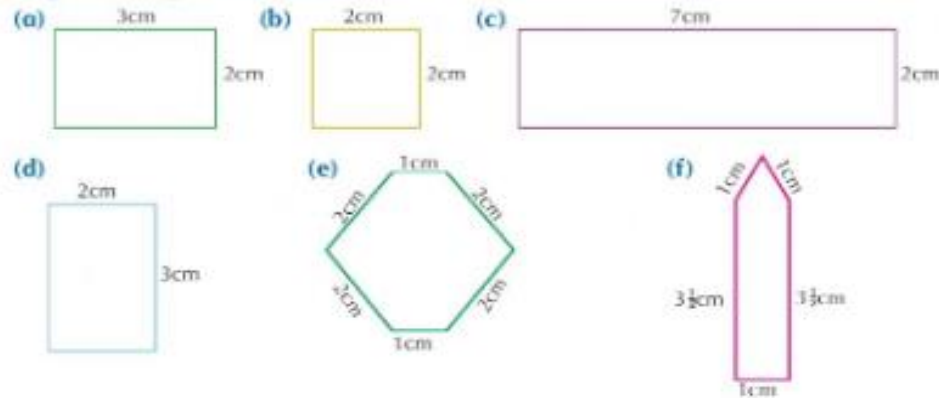
Fad: imlíne



Is ionann imlíne crutha agus an fad iomlán timpeall air.

Siúlann Slimí Seilide
 $4\text{cm} + 2\text{cm} + 4\text{cm} + 2\text{cm}$
 timpeall na himlíne.
 Tá an imlíne **12cm** ar fad.

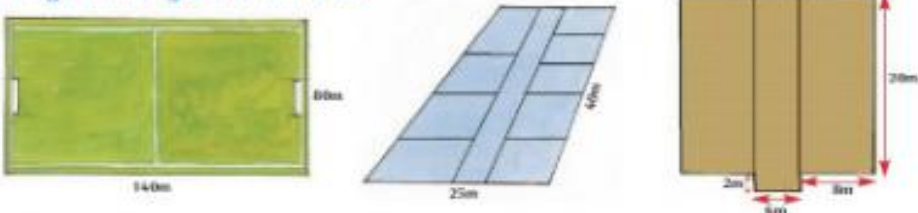
1. Faigh imlíne gach crutha.



2. Uaireanta coithfidh tú imlíne a thomhas i méadair.

Seo thíos pleananna atá déanta de réir scála le haghaidh (a) páirc peile, (b) díon scoile, (c) séipéal.

Faigh imlíne gach ceann acu.



3. Déan gach ceann acu seo a mheas agus a thomhas.

- | | | |
|--------------------------|------------------------|-------------------------|
| (a) do leabhar mata | (b) do dheasc | (c) deasc do mhúinteora |
| (d) do sheomra ranga | (e) clós na scoile | (f) an pháirc peile |
| (g) an chistin sa bhaile | (h) do sheomra codlata | (i) do theach |

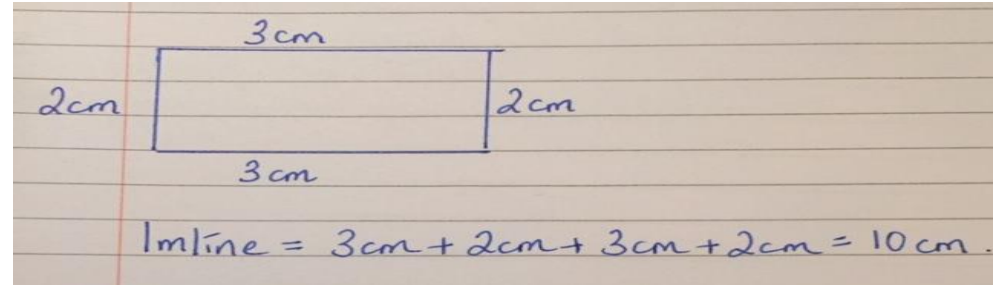
Imlíne: Perimeter

Is ionann imlíne crutha agus an fad iomlán timpeall air.

Perimeter is the total length of the boundary of a shape.

Ceist 1: Faigh imlíne gach cruth. Find the perimeter of each shape, e.g.,

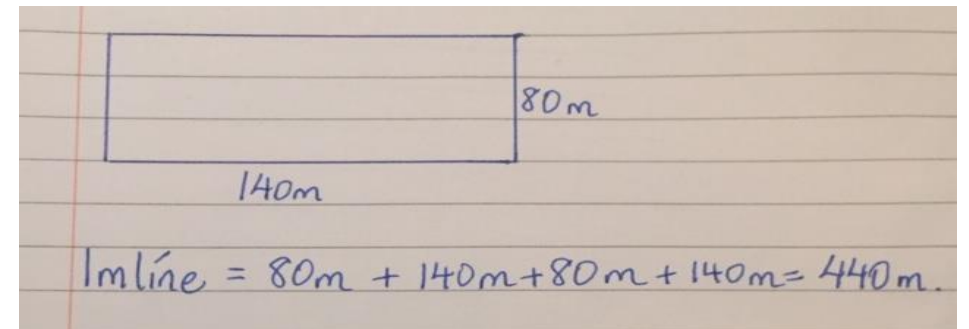
(a)



➤ Críochnaigh Ceist 1 anois.

Ceist 2: Faigh imlíne gach cruth. An uair seo, tá na faid i méadair. Déanann tú an rud céanna chun an imlíne a aimsiú. Find the perimeter of each shape. This time, the shapes are measured in metres but you find the perimeter in the exact same way. E.g.

(a) Páirc Peile



Críochnaigh Ceist 2 anois.

Táblaí na Seachtaine: 3, 6 & 9

