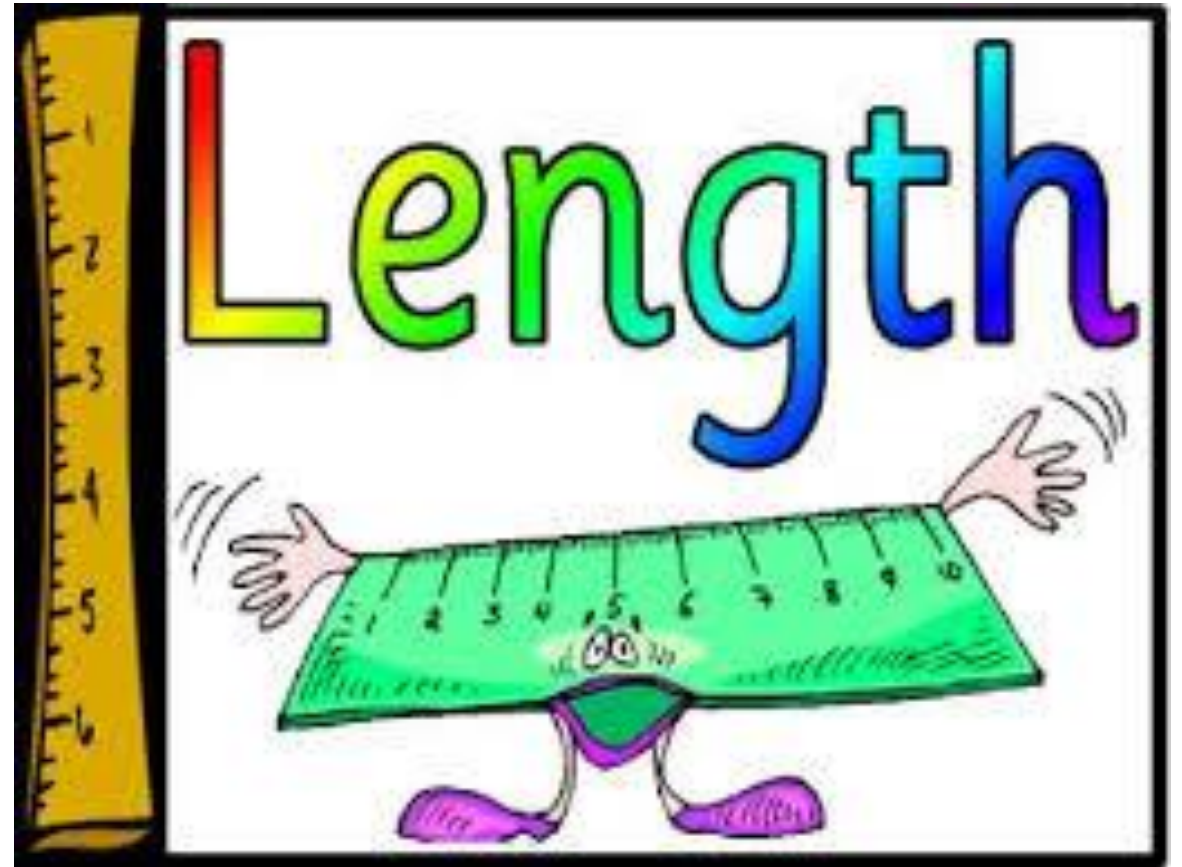
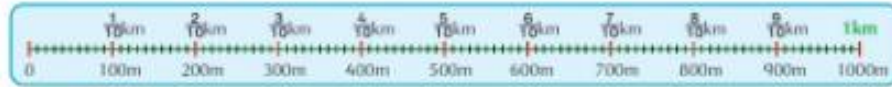


1ú – 5ú Meitheamh

# Mata Rang 4: Fad



## Fad: méadair agus ciliméadair



### 1. Cé mhéad é...

- (a)  $\frac{1}{2}$  km = 500m    (a)  $\frac{1}{4}$  km =  m    (b)  $\frac{2}{5}$  km =  m    (c)  $\frac{3}{10}$  km =  m  
 (d)  $\frac{2}{10}$  km =  m    (e)  $\frac{3}{10}$  km =  m    (f)  $\frac{5}{10}$  km =  m    (g)  $\frac{8}{10}$  km =  m  
 (h)  $\frac{7}{10}$  km =  m    (i)  $\frac{9}{10}$  km =  m    (j)  $1\frac{1}{10}$  km =  m    (k)  $1\frac{3}{10}$  km =  m  
 (l)  $2\frac{4}{10}$  km =  m    (m)  $4\frac{7}{10}$  km =  m    (n)  $7\frac{8}{10}$  km =  m    (o)  $8\frac{2}{10}$  km =  m

### 2. Cén codán de chiliméadar é...

- (a) 100m =     (b) 200m =     (c) 300m =     (d) 500m =     (e) 900m =

### 3. $1100\text{m} = 1\text{km} + 100\text{m}$

- (a)  $1200\text{m} = \square\text{km} + \square\text{m}$     (b)  $1400\text{m} = \square\text{km} + \square\text{m}$     (c)  $2300\text{m} = \square\text{km} + \square\text{m}$   
 (d)  $1250\text{m} = \square\text{km} + \square\text{m}$     (e)  $2320\text{m} = \square\text{km} + \square\text{m}$     (f)  $3460\text{m} = \square\text{km} + \square\text{m}$

### 4. Scríobh mar chiliméadair agus mar chodáin de chiliméadar.

$1100\text{m} \Rightarrow 1000\text{m} + 100\text{m} = 1\frac{1}{10}\text{km}$

- (a)  $1200\text{m} = \square\text{km}$     (b)  $1300\text{m} = \square\text{km}$     (c)  $1400\text{m} = \square\text{km}$     (d)  $2400\text{m} = \square$

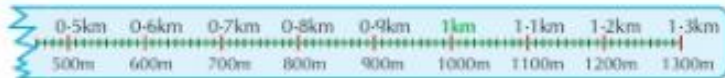


### 5. Scríobh mar mhéadair.

- (a) 0.1 km =     (b) 0.2 km =     (c) 0.4 km =     (d) 0.7 km =     (e) 0.9 km =

### 6. $100\text{m} = \frac{1}{10}\text{km} = 0.1\text{km}$

- (a)  $200\text{m} = \frac{\square}{10}\text{km} = \square\text{km}$     (b)  $400\text{m} = \frac{\square}{10}\text{km} = \square\text{km}$   
 (c)  $900\text{m} = \frac{\square}{10}\text{km} = \square\text{km}$     (d)  $600\text{m} = \frac{\square}{10}\text{km} = \square\text{km}$     (e)  $700\text{m} = \frac{\square}{10}\text{km} = \square\text{km}$



### 7. $1100\text{m} \Rightarrow 1000\text{m} + 100\text{m} \Rightarrow 1\frac{1}{10}\text{km} = 1.1\text{km}$

- $1200\text{m} = 1.2\text{km}$     (a)  $1300\text{m} = \square\text{km}$     (b)  $2100\text{m} = \square\text{km}$     (c)  $3400\text{m} = \square\text{km}$   
 (d)  $4500\text{m} = \square\text{km}$     (e)  $4900\text{m} = \square\text{km}$     (f)  $5300\text{m} = \square\text{km}$     (g)  $8900\text{m} = \square\text{km}$

## Fad: Méadair agus ciliméadair

### Ceist 1:

Scríobh na codáin de mhéadair mar méadair. Úsáid an slat tomhais ag barr na bileoige. Scríobh amach an uimhirabairt iomlán mar fhreagra. Rewrite the fractions of kilometres as metres. Use the measure at the top of the page to help you. Write your answers as full number sentences, e.g.  $\frac{1}{2}$  km = 500m

### Ceist 2:

Cén codán de chiliméadar é... What fraction of a kilometre is... e.g.

2(a)  $100\text{m} \Rightarrow \frac{100}{1,000}\text{km} = \frac{1}{10}\text{km}$ .

### Ceist 3:

Scríobh i bhfoirm leathnaithe / Write in expanded form e.g.  
 $\Rightarrow 1100\text{m} = 1000\text{m} + 100\text{m} = 1\text{km} + 100\text{m}$   
 ➤ Críochnaigh Ceist 3 anois.

### Ceist 4:

Scríobh mar chiliméadair agus mar chodáin de chiliméadair. Write as kms and fractions of kms. E.g.  
 $1100\text{m} = 1000\text{m} + 100\text{m} = 1\frac{1}{10}\text{km}$ .  
 ➤ Críochnaigh ceist 4 anois.

### Ceist 5, 6 & 7

Úsáid an slat tomhais agus scríobh mar mhéadair nó mar chodáin de chiliméadair. Using the measures, write as metres or fractions / decimal fractions of kilometres.  
 ➤ Críochnaigh ceisteanna 5, 6 & 7 anois.

## Fad: méadair agus ciliméadair



### 1. Cé mhéad cuaird atá i ngach ceann de na rásaí seo?

800m = 2 chuaird (a) 1600m =  chuaird (b) 2000m =  chuaird (c) 1000m =  chuaird

### 2. Scriobh fad na rásaí seo i gciliméadair:

400m = 0.4km (a) 100m =  km (b) 800m =  km (c) 1000m =  km  
 (d) 1500m =  km (e) 3000m =  km (f) 5000m =  km (g) 8000m =  km

Rith an chéad duine sa rás ráibe 100 méadar i 15 shoicind. San am céanna rith an dara duine 90m agus níor rith an tríú duine ach 80m. Is féidir na faid a scríobh mar seo i gciliméadair:

(a) rith an chéad duine 0.10km (b) rith an dara duine 0.09km (c) rith an tríú duine 0.08km.

### 3. Scriobh na faid seo a leanas i gciliméadair.

50m = 0.05km (a) 60m = 0.  km (b) 70m = 0.  km (c) 10m = 0.  km  
 120m = 0.12km (d) 150m = 0.  km (e) 130m = 0.  km (f) 250m = 0.  km



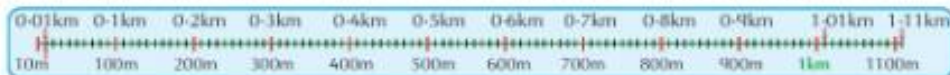
### 4. Scriobh na faid seo i méadair:

0.01km = 10m (a) 0.02km =  m (b) 0.04km =  m (c) 0.07km =  m  
 (d) 0.05km =  m (e) 0.03km =  m (f) 0.06km =  m (g) 0.09km =  m

5. (a) 0.11km =  m (b) 0.12km =  m (c) 0.39km =  m (d) 0.72km =  m  
 (e) 0.24km =  m (f) 0.59km =  m (g) 0.93km =  m (h) 0.89km =  m

### 6. Scriobh na faid seo a leanas i gciliméadair:

110m = 0.11km (a) 120m =  km (b) 140m =  km (c) 360m =  km



7. 1110m = 1.11km (a) 1120m =  km (b) 1130m =  km (c) 3170m =  km  
 (d) 4670m =  km (e) 5430m =  km (f) 6560m =  km (g) 7890m =  km

## Fad: Méadair agus Ciliméadair

- One lap of the course from A to the end (críoch) = 400 m
- There is also a 100m from B to the end (críoch)

### Ceist 1:

How many laps are in each of the following races? E.g. 800m = 2 laps

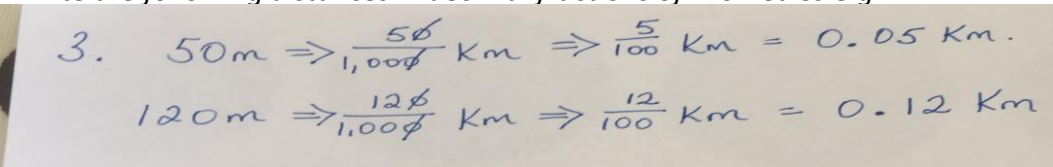
- Críochnaigh ceist 1 anois.

### Ceist 2:

Write the length of the following races as decimal fractions of kms e.g. 400m = 0.4 km

### Ceist 3:

Write the following distances in decimal fractions of kilometres e.g



### Ceist 4 & 5 & 6

Write these decimal fractions of kilometres as meters and vice versa. Use the measure to help you.

Write as full number sentences.

e.g. 0.01 km = 10m

### Ceist 7:

Write these metres as decimal fractions of kilometres. Use the measure to help you and write as full number sentences. E.g.

➤ 1110 m = 1000m + 110 m = 1km + 110m = 1.110 km = 1.11km

➤ 4670 m = 4000m + 670 m = 4 km + 670m = 4.670 km = 4.67km

Críochnaigh ceisteanna 4-7 anois.

Táblaí na Seachtaine: 2, 4

