

# Mata Rang 6: Súil Siar

8ú-12ú Meitheamh

## Caibidil 33 Súil Siar

1. Cóipeáil goch **cearnóg iolroithe** agus líon isteach na **fachtóirí** agus na **torthaí** atá in eosnamh.

(a)	(b)	(c)	(d)	(e)
$\begin{array}{ c c c } \hline \times & 3 & 6 \\ \hline 6 & 18 & ? \\ \hline 8 & ? & ? \\ \hline \end{array}$	$\begin{array}{ c c c } \hline \times & 5 & 7 \\ \hline 5 & 25 & ? \\ \hline 7 & 40 & ? \\ \hline \end{array}$	$\begin{array}{ c c c } \hline \times & 6 & ? \\ \hline 7 & ? & ? \\ \hline 8 & ? & 56 \\ \hline \end{array}$	$\begin{array}{ c c c } \hline \times & ? & 8 \\ \hline 5 & 35 & ? \\ \hline ? & 63 & ? \\ \hline \end{array}$	$\begin{array}{ c c c } \hline \times & ? & 9 \\ \hline 8 & ? & 72 \\ \hline 9 & 72 & 81 \\ \hline \end{array}$

2. (a)  $5 \cdot 6 \times 3 \cdot 7$  (b)  $6 \cdot 8 \times 4 \cdot 3$  (c)  $7 \cdot 2 \times 5 \cdot 4$  (d)  $8 \cdot 6 \times 6 \cdot 5$  (e)  $9 \cdot 3 \times 7 \cdot 8$   
 3. (a)  $4 \cdot 32 \times 2 \cdot 6$  (b)  $3 \cdot 78 \times 3 \cdot 9$  (c)  $5 \cdot 47 \times 6 \cdot 5$  (d)  $4 \cdot 93 \times 7 \cdot 8$  (e)  $7 \cdot 58 \times 8 \cdot 6$   
 4. (a)  $23 \cdot 6 \times 4 \cdot 3$  (b)  $45 \cdot 6 \times 3 \cdot 7$  (c)  $64 \cdot 8 \times 5 \cdot 7$  (d)  $73 \cdot 6 \times 8 \cdot 4$  (e)  $84 \cdot 9 \times 6 \cdot 9$   
 5. (a)  $36 \cdot 24 \times 2 \cdot 8$  (b)  $29 \cdot 38 \times 4 \cdot 8$  (c)  $48 \cdot 39 \times 3 \cdot 5$  (d)  $57 \cdot 93 \times 7 \cdot 9$  (e)  $67 \cdot 38 \times 9 \cdot 3$   
 6. (a)  $38 \cdot 6 \times 0 \cdot 42$  (b)  $43 \cdot 7 \times 0 \cdot 37$  (c)  $54 \cdot 8 \times 0 \cdot 56$  (d)  $65 \cdot 4 \times 0 \cdot 68$  (e)  $78 \cdot 9 \times 0 \cdot 79$   
 7. (a)  $283 \cdot 4 \times 0 \cdot 25$  (b)  $376 \cdot 5 \times 0 \cdot 29$  (c)  $486 \cdot 3 \times 0 \cdot 39$  (d)  $547 \cdot 8 \times 0 \cdot 57$  (e)  $637 \cdot 6 \times 0 \cdot 83$

8. (a) Liostaigh fachtóirí uile de 18 agus de 24.  
 (b) Ciorclaigh fachtóirí coiteanna uile de 18 agus de 24.  
 (c) Cad é an fachtóir coiteann is airde de 18 agus de 24?

9. Foigh an **fachtóir coiteann is airde** de:

- (a) 28 agus 42 (b) 24 agus 28 (c) 36 agus 45 (d) 48, 64 agus 80

10. (a) Scriobh an chéad dá iolraí dhéag de 4.  
 (b) Scriobh an chéad dá iolraí dhéag de 6.  
 (c) Ciorclaigh fachtóirí coiteanna de 4 agus de 6.  
 (d) Cad iad na fachtóirí coiteanna is ísle de 4 agus de 6?

11. Scriobh na **milliméadair** seo a leanas mar **cheintiméadair** ag baint úsáide as an bpointe deachúlach.

- (a)  $4\text{mm} = \square\text{cm}$  (b)  $7\text{mm} = \square\text{cm}$  (c)  $12\text{mm} = \square\text{cm}$  (d)  $36\text{mm} = \square\text{cm}$  (e)  $78\text{mm} = \square\text{cm}$

12. Scriobh na **ceintiméadair** seo a leanas mar **mhéadair** as baint úsáide as an bpointe deachúlach.

- (a)  $136\text{cm} = \square\text{m}$  (b)  $248\text{cm} = \square\text{m}$  (c)  $386\text{cm} = \square\text{m}$  (d)  $49\text{cm} = \square\text{m}$  (e)  $4\text{cm} = \square\text{m}$

13. Scriobh na **méadair** seo a leanas mar **chiliméadair** ag baint úsáide as an bpointe deachúlach.

- (a)  $317\text{m} = \square\text{km}$  (b)  $898\text{m} = \square\text{km}$  (c)  $3217\text{m} = \square\text{km}$  (d)  $94\text{m} = \square\text{km}$  (e)  $7\text{m} = \square\text{km}$

14. Scriobh mar **mhéadair**.

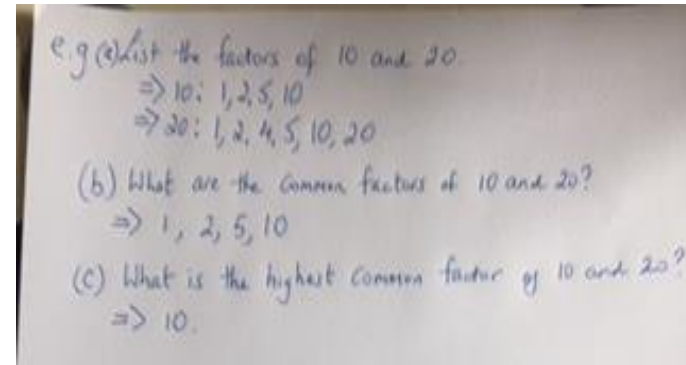
- (a)  $2 \cdot 437\text{km}$  (b)  $4 \cdot 679\text{km}$  (c)  $3 \cdot 508\text{km}$  (d)  $5 \cdot 68\text{km}$  (e)  $4 \cdot 089\text{km}$   
 (f)  $0 \cdot 369\text{km}$  (g)  $0 \cdot 53\text{km}$  (h)  $0 \cdot 049\text{km}$  (i)  $2 \cdot 087\text{km}$  (j)  $5 \cdot 007\text{km}$   
 (k)  $3 \frac{7}{10}\text{km}$  (l)  $4 \frac{2}{5}\text{km}$  (m)  $2 \frac{38}{100}\text{km}$  (n)  $5 \frac{17}{100}\text{km}$  (o)  $3 \frac{9}{100}\text{km}$

## Dul Siar: Revision

### ➤ Ceist 2 – 7: Déan cuid (a)

#### Ceist 8:

- (a) List the factors of 18 and 24. e.g.  
 (b) Circle the common factors of 18 and 24  
 (c) What is the highest common factor of 18 and 24

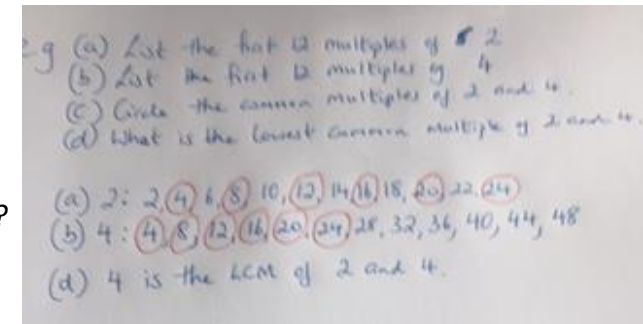


#### Ceist 9:

Find the highest common factor of the numbers given in (a) – (d)  
 Look at question 8 above and the example given.

#### Ceist 10:

- (a) List the first 12 multiples of 4.  
 (b) List the first 12 multiples of 6.  
 (c) Circle the common multiples of 4 and 6.  
 (d) What is the lowest common multiple of 4 and 6?



11. Scriobh na **milliméadair** seo a leanas mar **cheintiméadair** ag baint úsáide as an bpointe deachúlach.

(a)  $4\text{mm} = \square\text{cm}$  (b)  $7\text{mm} = \square\text{cm}$  (c)  $12\text{mm} = \square\text{cm}$  (d)  $36\text{mm} = \square\text{cm}$  (e)  $78\text{mm} = \square\text{cm}$

12. Scriobh na **ceintiméadair** seo a leanas mar **mhéadair** as baint úsáide as an bpointe deachúlach.

(a)  $136\text{cm} = \square\text{m}$  (b)  $248\text{cm} = \square\text{m}$  (c)  $386\text{cm} = \square\text{m}$  (d)  $44\text{cm} = \square\text{m}$  (e)  $4\text{cm} = \square\text{m}$

13. Scriobh na **méadair** seo a leanas mar **chiliméadair** ag baint úsáide as an bpointe deachúlach.

(a)  $317\text{m} = \square\text{km}$  (b)  $898\text{m} = \square\text{km}$  (c)  $3217\text{m} = \square\text{km}$  (d)  $94\text{m} = \square\text{km}$  (e)  $7\text{m} = \square\text{km}$

14. Scriobh mar **mhéadair**.

(a)  $2.437\text{km}$  (b)  $4.679\text{km}$  (c)  $3.508\text{km}$  (d)  $5.68\text{km}$  (e)  $4.089\text{km}$

(f)  $0.369\text{km}$  (g)  $0.53\text{km}$  (h)  $0.049\text{km}$  (i)  $2.087\text{km}$  (j)  $5.007\text{km}$

(k)  $3\frac{7}{10}\text{km}$  (l)  $4\frac{3}{4}\text{km}$  (m)  $2\frac{436}{1000}\text{km}$  (n)  $5\frac{17}{1000}\text{km}$  (o)  $3\frac{9}{1000}\text{km}$

### **Ceist 11:**

Write the millimetres as centimetres using a decimal point e.g.

(a)  $4\text{mm} = 0.4\text{cm}$

### **Ceist 12:**

Write the centimetres as metres using a decimal point e.g.

(a)  $136\text{cm} = 1.36\text{m}$

### **Ceist 13:**

Write the metres as kilometres using a decimal point e.g.

(a)  $317\text{m} = 0.317\text{km}$

### **Ceist 14:**

Write as metres e.g.

(a)  $2.347\text{km} = 2347\text{m}$

(h)  $0.049\text{km} = 49\text{m}$

(o)  $3\frac{9}{1000}\text{km} = 3009\text{m}$

## Súil Siar

1. (a)  $\begin{array}{r} \text{cm} \quad \text{mm} \\ 4 \quad 7 \\ + 2 \quad 8 \\ \hline \end{array}$  (b)  $\begin{array}{r} \text{cm} \quad \text{mm} \\ 9 \quad 3 \\ - 3 \quad 8 \\ \hline \end{array}$  (c)  $\begin{array}{r} \text{m} \quad \text{cm} \\ 7 \quad 63 \\ + 5 \quad 49 \\ \hline \end{array}$  (d)  $\begin{array}{r} \text{m} \quad \text{cm} \\ 8 \quad 42 \\ - 3 \quad 94 \\ \hline \end{array}$  (e)  $\begin{array}{r} \text{km} \quad \text{m} \\ 7 \quad 886 \\ + 6 \quad 547 \\ \hline \end{array}$  (f)  $\begin{array}{r} \text{km} \quad \text{m} \\ 14 \quad 345 \\ - 9 \quad 876 \\ \hline \end{array}$

2. (a)  $4\frac{1}{2}\text{cm} + 38\text{mm} + 2.3\text{cm}$  (b)  $47\text{mm} + 3\frac{1}{2}\text{cm} + 5.9\text{cm}$  (c)  $3\frac{3}{8}\text{cm} + 69\text{mm} + 3.8\text{cm}$   
 (d)  $346\text{cm} + 4.68\text{m} + 5\text{m}$  (e)  $7\frac{3}{4}\text{m} + 5.86\text{m} + 6\frac{7}{10}\text{m}$   
 (f)  $859\text{cm} + 7\frac{7}{100}\text{m} + 5\frac{4}{5}\text{m}$  (g)  $2\text{km} 376\text{m} + 4896\text{m} + 3.783\text{km}$   
 (h)  $5\frac{3}{4}\text{km} + 3.94\text{km} + 3\text{km}$  (i)  $3\frac{7}{1000}\text{km} + 2\frac{7}{10}\text{km} + 4109\text{m}$

3. (a)  $(4.73\text{m} + 24.3\text{cm}) \times 6$  (b)  $(3\frac{2}{5}\text{m} + 5\text{m} 78\text{cm}) \times 4$  (c)  $(9.86\text{m} - 2\frac{7}{100}\text{m}) \times 8$   
 (d)  $3.496\text{km} + 3698\text{m} \div 3$  (e)  $(5795\text{m} + 2\text{km} 873\text{m}) \div 4$  (f)  $(9.768\text{km} - 2\frac{882}{1000}\text{km}) \div 6$

4. (a)  $11.4 \div 0.6$  (b)  $16.1 \div 0.7$  (c)  $23.5 \div 0.5$  (d)  $22.4 \div 0.8$   
 5. (a)  $18.65 \div 0.5$  (b)  $18.32 \div 0.4$  (c)  $21.84 \div 0.6$  (d)  $21.42 \div 0.9$   
 6. (a)  $28.12 \div 1.9$  (b)  $47.30 \div 2.2$  (c)  $35.56 \div 2.8$  (d)  $46.41 \div 3.9$   
 7. (a)  $387.5 \div 3.1$  (b)  $415.8 \div 2.7$  (c)  $548.8 \div 4.9$  (d)  $629.2 \div 5.2$   
 8. (a)  $5.232 \div 4.8$  (b)  $6.403 \div 5.9$  (c)  $5.422 \div 6.3$  (d)  $7.844 \div 7.4$   
 9. (a)  $44.28 \div 0.18$  (b)  $62.93 \div 0.29$  (c)  $69.76 \div 0.32$  (d)  $55.10 \div 0.38$   
 10. (a)  $5.334 \div 0.42$  (b)  $5.616 \div 0.48$  (c)  $8.058 \div 0.51$  (d)  $9.344 \div 0.73$

## 11. Scriobh na codáin seo a leanas mar chéatadáin.

(a)  $\frac{1}{2} = \square\%$  (b)  $\frac{2}{3} = \square\%$  (c)  $\frac{1}{5} = \square\%$  (d)  $\frac{5}{8} = \square\%$  (e)  $\frac{3}{8} = \square\%$   
 (f)  $\frac{4}{10} = \square\%$  (g)  $\frac{11}{20} = \square\%$  (h)  $\frac{11}{20} = \square\%$  (i)  $\frac{6}{25} = \square\%$  (j)  $\frac{28}{50} = \square\%$   
 (k)  $\frac{1}{3} = \square\%$  (l)  $\frac{3}{4} = \square\%$  (m)  $\frac{1}{8} = \square\%$  (n)  $\frac{3}{10} = \square\%$  (o)  $\frac{37}{50} = \square\%$

## 12. Cóipeáil agus críochnaigh an tábla seo.

codán	$\frac{1}{4}$	$\frac{1}{5}$	$\frac{1}{10}$	$\frac{1}{20}$
deachúil	0.125		0.46	0.6
céatadán		35%	34%	12%

13. (a) Faigh 20% de €475. (b) Cad é 25% de €948? (c) Faigh 40% de €865.  
 (d) Faigh  $33\frac{1}{3}\%$  de €12.84. (e) Cad é  $12\frac{1}{2}\%$  de €11.68? (f) Faigh  $66\frac{2}{3}\%$  de €741.
14. (a) Méadaigh 240 de 10%. (b) Méadaigh 360 de 25%. (c) Méadaigh 475 de 20%.  
 (d) Méadaigh 985 de 40%. (e) Méadaigh 462 de  $33\frac{1}{3}\%$ . (f) Méadaigh 696 de  $12\frac{1}{2}\%$ .  
 (g) Méadaigh 1942 de 6%. (h) Méadaigh 1874 de 23%. (i) Méadaigh 2348 de 34%.
15. (a) Laghdaigh 470 de 20%. (b) Laghdaigh 356 de 25%. (c) Laghdaigh 890 de 30%.  
 (d) Laghdaigh 970 de 60%. (e) Laghdaigh 928 de  $12\frac{1}{2}\%$ . (f) Laghdaigh 776 de  $37\frac{1}{2}\%$ .  
 (g) Laghdaigh 1465 de 7%. (h) Laghdaigh 2374 de 23%. (i) Laghdaigh 2869 de 42%.

## Ceist 1 & 2:

Addition and subtraction of length.

Tip: Rewrite the lengths so they are all the same units of length using a decimal point. You should therefore be adding subtracting all in cms or metres or kilometres. e.g.

2 (a)  $4\frac{1}{2}\text{cm} + 38\text{mm} + 2.3\text{cm}$   
 $\Rightarrow 4.5\text{cm} + 3.8\text{cm} + 2.3\text{cm}$

2 (l)  $3\frac{74}{100} + 2\frac{7}{10} + 4109\text{m}$   
 $\Rightarrow 3.74\text{km} + 2.70\text{km} + 4.109\text{km}$

➤ Déan Ceist 1 ar fad agus déan ceist 2 b, c, d, e & f

## Ceist 5-10: Déan cuid (a) amháin i ngach ceist

Uimhreacha deachúlacha a roinnt.

Dividing decimals. Remember, get rid of the decimal point in the divisor first by multiplying by 10, 100 or 1000, then work it out. Please show your workings out in your copy as per example given e.g.

4(a)  $11.4 \div 0.6 \Rightarrow 114 \div 6$   
 5(b)  $18.32 \div 0.4 \Rightarrow 183.2 \div 4$   
 9(b)  $62.93 \div 0.29 \Rightarrow 6293 \div 29$

## Ceist 11:

Rewrite the fractions as percentages. Write the whole number sentence. Do parts a, c, e, f, h, j, l, n, o

## Ceist 13

Calculate the percentages. Nod: Remember – 20% =  $\frac{1}{5}$ , 25% =  $\frac{1}{4}$ , 40% =  $\frac{4}{10}$ ,  $33\frac{1}{3}\%$  =  $\frac{1}{3}$ ,  $12\frac{1}{2}\%$  =  $\frac{1}{8}$ ,  $66\frac{2}{3}\%$  =  $\frac{2}{3}$

## Ceist 14 & 15

Méadaigh nó laghdaigh na huimhreacha faoi chéatadáin.

Increase or decrease a number by a percentage. E.g.

14 (a) Méadaigh 240 de 10%  
 $\Rightarrow 10\%$  de 240  
 $\Rightarrow \frac{1}{10}$  de 240 = €24  
 $\Rightarrow €240 + €24 = €264.$

15 (a) Laghdaigh 470 de 20%  
 $\Rightarrow 20\%$  de 470  
 $\Rightarrow \frac{1}{5}$  de 470 = 94  
 $\Rightarrow \begin{array}{r} 470 \\ - 94 \\ \hline 376 \end{array}$

## Súil Siar

1. Scríobh iad seo a leanas mar amanna **rn** nó **in**.

- (a) 20 nóiméad chun 8 ar maidin (b) ceathrú tar éis 4 san iarnóin  
(c) 25 tar éis 1 san iarnóin (d) 10 nóiméad chun 11 san oíche

2. Scríobh na hamanna seo a leanas sa chóras **24 uair**.

- (a) 3.20 rn (b) 11.15 in (c) 8.45 rn (d) 10.34 in (e) 1.27 rn

3. Scríobh iad seo mar **rn** nó **in**.

- (a) 15:37 (b) 03:09 (c) 20:18 (d) 09:25 (e) 13:46

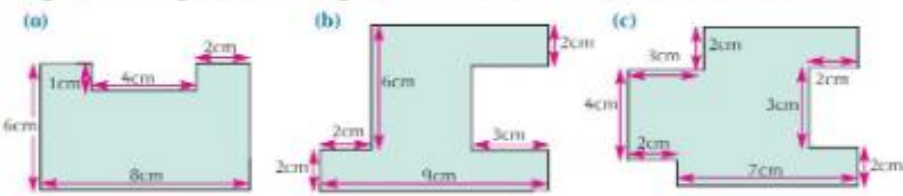
4. Cé mhéad **uair** agus **nóiméad** atá idir na hamanna seo?

- (a) 07:20 go 09:45 (b) 09:35 go 14:20 (c) 11:36 go 17:25 (d) 08:13 go 15:05

5. Oibrigh amach an **1-ús** ar na méideanna airgid seo a leanas.

- (a) €100 ar feadh 1 bhliain @ 10% sa bhliain. (e) €600 ar feadh 3 bliana @ 4% sa bhliain  
(b) €200 ar feadh 1 bhliain @ 8% sa bhliain. (f) €800 ar feadh 1½ bhliain @ 10% sa bhliain  
(c) €300 ar feadh 2 bhliain @ 10% sa bhliain. (g) €1000 ar feadh 2 bhliain @ 3½% sa bhliain  
(d) €200 ar feadh 2 bhliain @ 6% sa bhliain. (h) €2000 ar feadh 2 bhliain @ 2½% sa bhliain

6. Faigh (i) imlíne agus (ii) achar na gcruthanna seo. (Níl fóirmhéid sna cruthanna).



7. Faigh **praghas díola** na n-earraí seo.

- (a) Ceannaíodh é ar €240 agus díoladh é ar bhrabús 10%.  
(b) Ceannaíodh é ar €380 agus díoladh é ar chailteanas 10%.  
(c) Ceannaíodh é ar €448 agus díoladh é ar bhrabús 12½%.  
(d) Ceannaíodh é ar €1472 agus díoladh é ar chailteanas 25%.  
(e) Ceannaíodh é ar €2860 agus díoladh é ar bhrabús 30%.  
(f) Ceannaíodh é ar €3590 agus díoladh é ar chailteanas 40%.

8. Faigh an **bunphraghas**.

	praghas díola	brabús	bunphraghas		praghas díola	caillteanas	bunphraghas
(a)	€180	20%		(d)	€180	10%	
(b)	€240	33⅓%		(e)	€240	20%	
(c)	€350	25%		(f)	€350	12½%	

## Ceist 1:

Write the times in question 1 using a.m or p.m (r.n. nó i.n.)

- (a) 20 mins to 8 in the morning  
(b) Quarter past four in the afternoon  
(c) 25 past 1 in the afternoon  
(d) 10 to 11 at night.

## Ceist 2:

Write the times shown in the 24 hour clock. Remember not to use the letters a.m or p.m when recording time using the 24 hour clock.

## Ceist 3:

Write the times shown as analogue, using rn nó in (am or pm)

## Ceist 4:

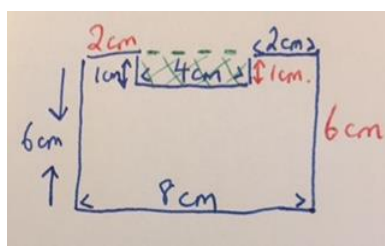
Subtracting time. E.g. If the minutes on top are bigger than those on bottom, you must rename e.g

## Ceist 5:

Calculate the interest on the following amounts. Interest rate and term (number of years) vary.

## Ceist 6:

Find the (i) perimeter and (ii) area of the shapes. E.g.



Imlíne:  $6\text{cm} + 2\text{cm} + 1\text{cm} + 4\text{cm} + 1\text{cm} + 2\text{cm} + 6\text{cm} + 8\text{cm} = 30\text{cm}$

Achal:  $F \times L$   
 $\rightarrow 8\text{cm} \times 6\text{cm} = 48\text{cm}^2$   
 (this is the full rectangle. We must now find the area of the small rectangle at the top and subtract it.)  
 $F \times L$   
 $\rightarrow 4\text{cm} \times 1\text{cm} = 4\text{cm}^2$   
 $48\text{cm}^2 - 4\text{cm}^2 = 44\text{cm}^2$

Táblaí na seachtaine: 7

